

# Infrio Model AN Stainless Steel Storage Cabinets GN 2/1

- Temp fridge : -2°C/+5°C
- Temp freezer (BT): -18°C/-22°C
- Fan assisted
- Stainless steel interior/exterior with rounded internal corners
- Lockable
- Fully automatic operation
- Electronic controller
- 3 grills per door
- Shelf and support designed to accommodate 2 x BT 1/1
- Interior light
- Castors

Model	Dimensions (L x D x H mm)	Capacity (L)
AN 510 (BT)	680x830x2100	509
AN 1100 (BT)	1370x830x2100	1132

Options

- 600 x 400mm Trays for Patisserie
- Mixed Temperature



AN 510 (BT)



AN 1100 (BT)

\* Please Refer to Manufacturers Catalogue for Full Product Specifications

# Infrio Model AGN 2/1 GN Stainless Steel Service Cabinet

- Temp fridge : -2°C/+5°C
- Temp freezer (BT): -18°C/-22°C
- Fan assisted
- Stainless steel interior/exterior with rounded internal corners
- Lockable
- Fully automatic operation
- Electronic controller
- 3 grills per door
- Shelf and support designed to accommodate 2 x GN 1/1
- Castors

Model	Dimensions (L x D x H mm)	Capacity (L)
AGN701 (BT)	740 x 830 x 2010	600
AGN1402 (BT)	1480 x 830 x 2010	1325



AGN701 (BT)



AGN1402 (BT)

\* Please Refer to Manufacturers Catalogue for Full Product Specifications

# Infrio Model ASN Storage Fridge & Freezer

## FRIDGE ASN

- Temp 1°C/+5°C
- Fan assisted
- Lockable
- Stainless steel or white exterior

## FREEZER ASN (BT)

- Temp -18°C
- Static fixed shelf
- Lockable
- Stainless steel or white exterior

Model	Dimensions (L x D x H mm)	Capacity (L)	Shelves
ASN 200 (BT)	600 x 585 x 845	135	3pcs
ASN 400 (BT)	600 x 585 x 1885	350	4pcs
ASN 600 (BT)	775 x 650 x 1885	570	4pcs



ASN 200S (BT)



ASN 400 (BT)

\* Please Refer to Manufacturers Catalogue for Full Product Specifications

## Infrío Fish Cabinet

- Operating Temp -5°C/+5°C
- Stainless steel interior/exterior
- Ventilated refrigeration
- Rounded corners with plug hole
- Electronic controller
- 7 Containers 600mm X 400mm

Model    Dimensions (L x D x H mm)  
ASP-IE    680 x 800 x 201



ASP-IE

## APX Fish Cabinet

- Operating Temp -10°C/+5°C
- Stainless steel interior/exterior
- Static refrigeration
- Rounded corners with plug hole
- Electronic controller
- 6 Containers 600mm X 400mm

Model    Dimensions (L x D x H mm)  
APX 300TN    580 x 768 x 1640



APX 300TN

\* Please Refer to Manufacturers Catalogue for Full Product Specifications

## Infrio Chest Freezers

- Temp -18°C
- Static
- Lockable
- Castors

Model	Dimensions (L x D x H mm)	Capacity (L)
CM-312S	1191 x 670 x 842	312
CM-466S	1483 x 701 x 830	466
CM-768S	1850 x 815 x 713	768



CM 466S

## Infrio Pizza Counter MPG

- Temp Range in table: 0°C/+5°C
- Fan Assisted
- Granite work surface
- Separate refrigerated ingredients section
- Fully automatic operation
- Electronic controller
- Stainless steel interior/exterior
- 1 Grill and set of supports per door

Model	Dimensions (L x D x H mm)
MPG 1510	1510x800x990
MPG 2020	2020x800x990
MPG 2020D	2020x800x990

### Options

- Ambient dough drawers model MPG 2020D



MPG 2020D

\* Please Refer to Manufacturers Catalogue for Full Product Specifications

## Infrio Ingredients Counter PZ

- Temp Range: 0°C/+5°C
- Fan Assisted
- Fully automatic operation
- Electronic controller
- Stainless steel interior/exterior
- 1 Grill and set of supports per door
- Castors

Model	Dimintions	Door	GN1/3
MR-29PZ	705x770x1080mm	1	4
MR-48PZ	1225x770x1080mm	2	6
MR-60PZ	1555x770x1080mm	3	8



MR-48PZ

## Infrio Ingredients Counters PGA

- Temp Range: 0°C/+5°C
- Fan Assisted
- Fully automatic operation
- Electronic controller
- Stainless steel interior/exterior
- 1 grill and set of supports per door
- Castors

Model	Dimintions	Door	GN1/3
MR-120 PGA	1203x820x1020mm	1	6
MR-179 PGA	1798x820x1020mm	2	9
MR-239 PGA	2393x820x1020mm	3	12



MR-179PGA

\* Please Refer to Manufacturers Catalogue for Full Product Specifications

## Infrio Refrigerated/Freezer GN Tables

- Temp fridge (TN): -2°C/+5°C
- Temp freezer (BT): -10°C/-20°C
- Fully automatic operation with digital controller
- Stainless steel interior/exterior with rounded internal corners
- Ventilated refrigeration
- Rounded corners
- Fan Assisted
- With/without Splash Back
- 1 Grill per door
- Splash back

Model	Dimensions	Door
MR-136G	1360x700x860mm	2
MR-180G	1795x700x860mm	3
MR-223G	2230x700x860mm	4

### Options

- Set drawers instead of doors (Not Available on Freezer Version)
- Glass doors on positive temperature only
- Remote
- 960mm Height



MR-180G

## Infrio 2DR Saladette and 2DR Preparation Counter

### S 90

- Temp Range: 2°C/+5°C
- Fan Assisted
- Stainless steel interior/exterior with rounded internal corners
- Fully automatic operation with digital controller
- 1 Grill per Door

Model	Dimensions (L x D x H mm)
S 90	900 x 700 x 850

### S 90Pz

- Temp Range: 2°C/+5°C
- Granite work surface
- Capacity 5 x 1/6 GN
- Fan Assisted
- Stainless steel interior/exterior with rounded internal corners
- Fully automatic operation with digital controller
- 1 Grill per Door

Model	Dimensions (L x D x H mm)
S 90P	900 x 700 x 1075

### Options

- GN Containers



S 90



S 90P

\* Please Refer to Manufacturers Catalogue for Full Product Specifications

# Infrio Ingredient Unit Counter Top VIP

## VIP

- Temp. Range + 2°C /+ 8°C
- St. Steel Exterior / Interior
- Electronically Controlled
- 1/3 GN Capacity
- St. Steel Lid

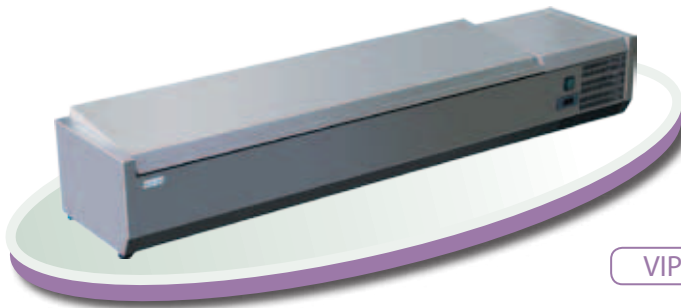
## VIP

- Temp Range: +2°C/+4°C
- Fan Assisted
- Int./Ext. In St. Steel
- Fully Automatic Operation with Digital Controller.
- Max GN Bucket Depth:
- Central Band: 150mm
- Rest: 200mm

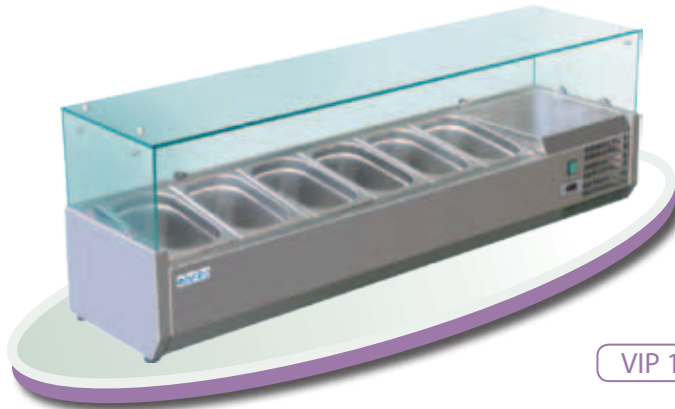
Model	Dimintions	Net Capacity
VIP 1200/380	1200x395x225mm	4 x 1/3 GN
VIP 1400/380	1400x395x225mm	5 x 1/3 GN
VIP 1500/380	1500x395x225mm	6 x 1/3 GN
VIP 1600/380	1600x395x225mm	7 x 1/3 GN
VIP 1800/380	1800x395x225mm	8 x 1/3 GN
VIP 2000/380	2000x395x225mm	9 x 1/3 GN

### Options

- GN Containers



VIP 1500



VIP 1500C

# Saladette 2DR and 3DR

## ME1000 BAN

- Temp Range: +2°C/+4°C
- Fan Assisted
- Int./Ext. In St. Steel
- Fully Automatic Operation with Digital Controller.
- Max GN Bucket Depth:
- Central Band: 150mm
- Rest: 200mm

Length	Depth	Height
978mm	700mm	857mm

## ME1003 BAN

- Temp Range: 2°C/+5°C
- Fan Assisted
- Stainless steel interior/exterior with rounded internal corners
- Fully automatic operation with digital controller
- 1 Grill per Door

Dimensions (L x D x H mm)		
1460mm	700mm	857mm

### Options

- GN Containers



ME1000 BAN



ME1003 BAN

\* Please Refer to Manufacturers Catalogue for Full Product Specifications

## Infrio Refrigerated GN Wells

- Temp range: 2°C/+5°C
- Stainless steel exterior/interior
- Fan assisted
- Fully automatic operation
- Electronic controller

Model	Dimensions (L x D mm)	GN
2GN.R	842x742x838	2
3GN.R	1176x742x838	3
4GN.R	1510x742x838	4
5GN.R	1845x742x838	5



4GN.R

## Infrio Heated GN Well

- Temp range: +80
- Stainless steel exterior/interior
- Bain maire

Model	Dimensions (L x D x H mm)	Power (W)	GN
2GN.BM	818x725x662	2800	2
3GN.BM	1152x725x662	3800	3
4GN.BM	1486x725x662	4800	4
5GN.BM	1820x725x662	5800	5



4GN.BM

\* Please Refer to Manufacturers Catalogue for Full Product Specifications

# Infrio AMX Blast Chiller/Freezer

- Operating Temp
- 70°C to 3°C = 90mins
- 70°C to -18°C = 240mins
- Fan assisted
- Stainless steel construction

Model	LxDxH(mm)	Capacity (GN)	KG (Chill/Freeze)
AMX ONE	600 x 620 x 386	3 x 2/3	7 / 5
AMX 5T	800 x 800 x 930	5 x 1/1	20 / 15
AMX 10T	800 x 800 x 1600	10 x 1/1	40 / 28
AMX 13T	800 x 800 x 1750	13 x 1/1	60 / 38
AMX 20T*	900 x 1194 x 2180	20 x 1/1	110 / 85
AMX 40T*	1550 x 1370 x 2274	40 x 1/1	200 / 175

\*trolley

Please Refer to Manufacturers Catalogue for Full Product Specifications

### Options

- Core probe AMX ONE, AMX 5T
- Trolley
- Condensing unit (remote application)



AMX ONE



AMX 5T

# Linea Blanca Glass/Dish Washers

- AISI 304 stainless steel construction
- Washing system by fixed Jets
- Wash Cycle 20sec to 120sec
- Automatic Rinse Aid Doser
- Two baskets

Model	Dimensions (L x D x H mm)	Power (W)	Clearance (mm)
V40	470 x 545 x 725	3100	270
V50	570 x 660 x 825	3600	310
V70	750 x 740 x 1445 (1925)	6800 3phase	420

### Options

- Detergent pump
- Drain pump



V50



\* Please Refer to Manufacturers Catalogue for Full Product Specifications

# MK 6 - MK 10 Coldroom

- Available with or without Floor
- Left or Right hand Door opening
- Clear Passage 650 x 1870mm
- MSG/MS (Remote) and Freeblock (Integral)
- Operating Temps:  
Chill 0°C to + 2°C  
Freezer -18°C to - 22°C

### Options

- Galvanised Steel Tiered Shelves
- Piping & Cable for Remote Systems
- Internal Light
- Plastic Strip Door
- Brackets for roomwall or brickwall
- Electronic Controller with audio-visual alarm

### Save Time

\* Fast Fit patented Panel System with twin hook fasteners for quick assembly.

\* 90 minutes Installation time for Misa Remote Condensing units (max distance 10 metres)

Ambient Temp: 32°C  
 Fresh Product input temp: 25°C & - 4°C for Frozen  
 Daily Working Time: 18 hours  
 Daily Product Handling: 30kg/cu.m



MK16 20

S6 S10 In order to obtain ext. dim. of the coldrooms  
 hi 203 hi 203 cm 12 x S6 - cm 20 x S10  
 he 215 he 223 must be added to the measurements below.



Remote Condensing Unit



Electronic Controllers

